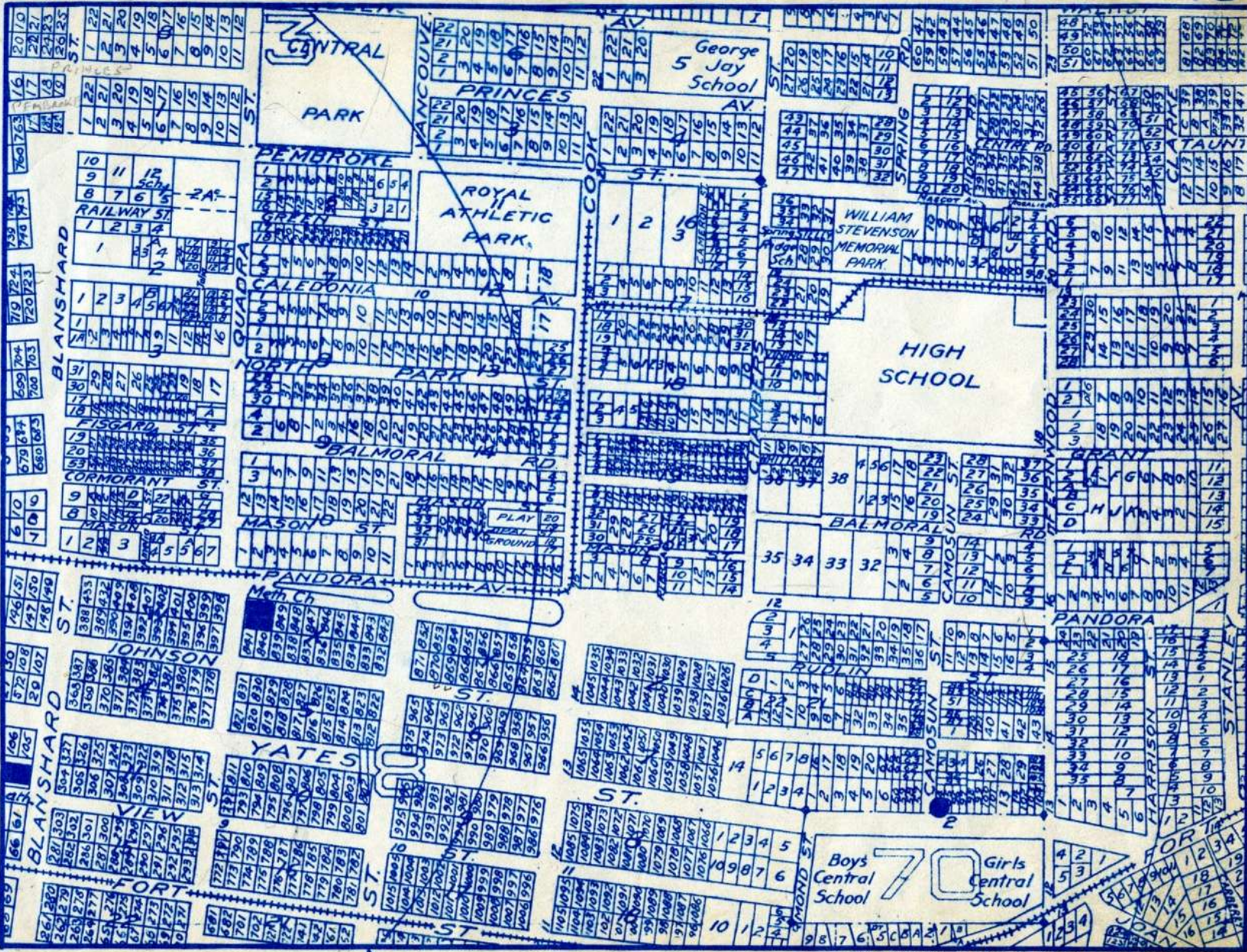
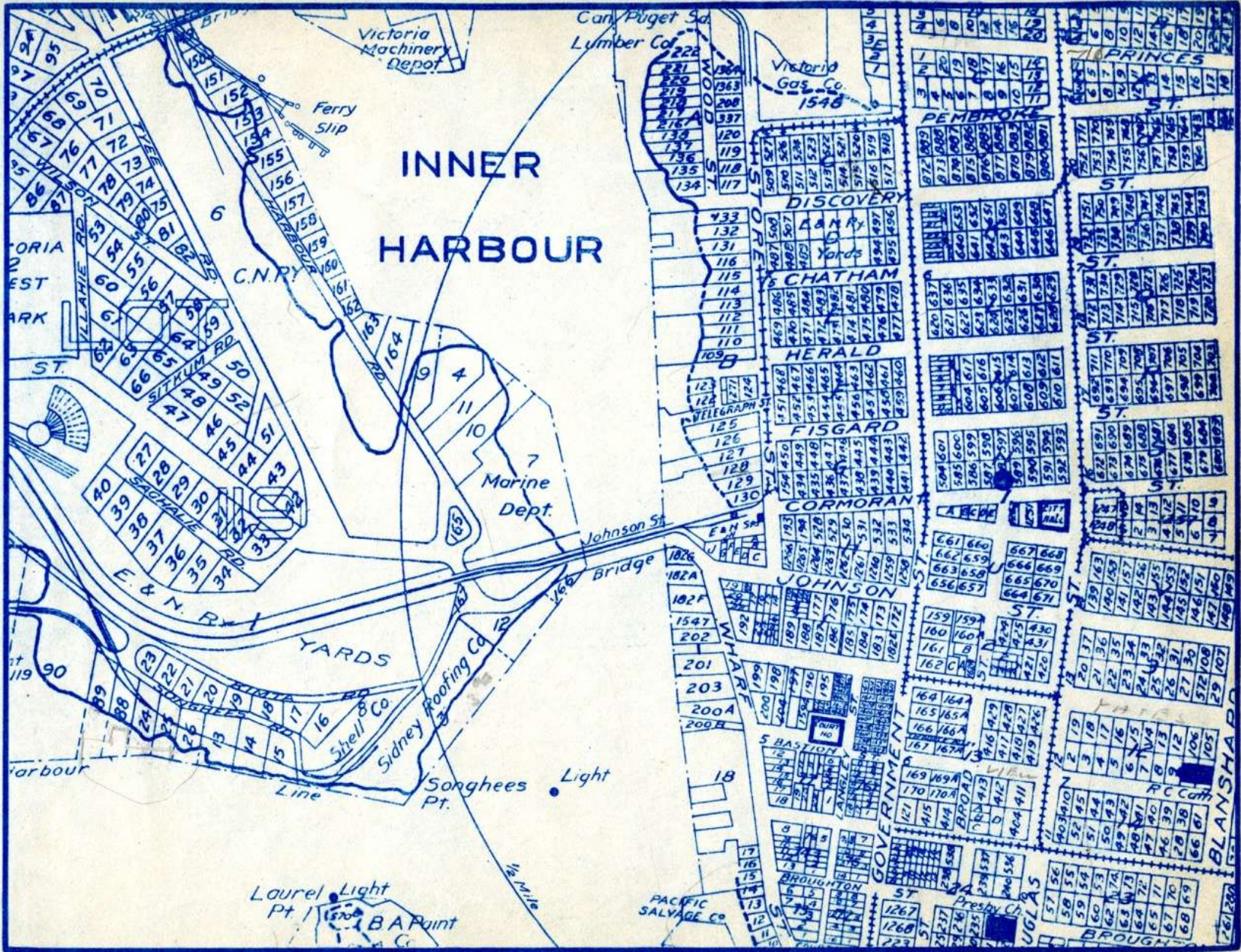


17 TO WEST



24 TO NORTH

18 TO WEST



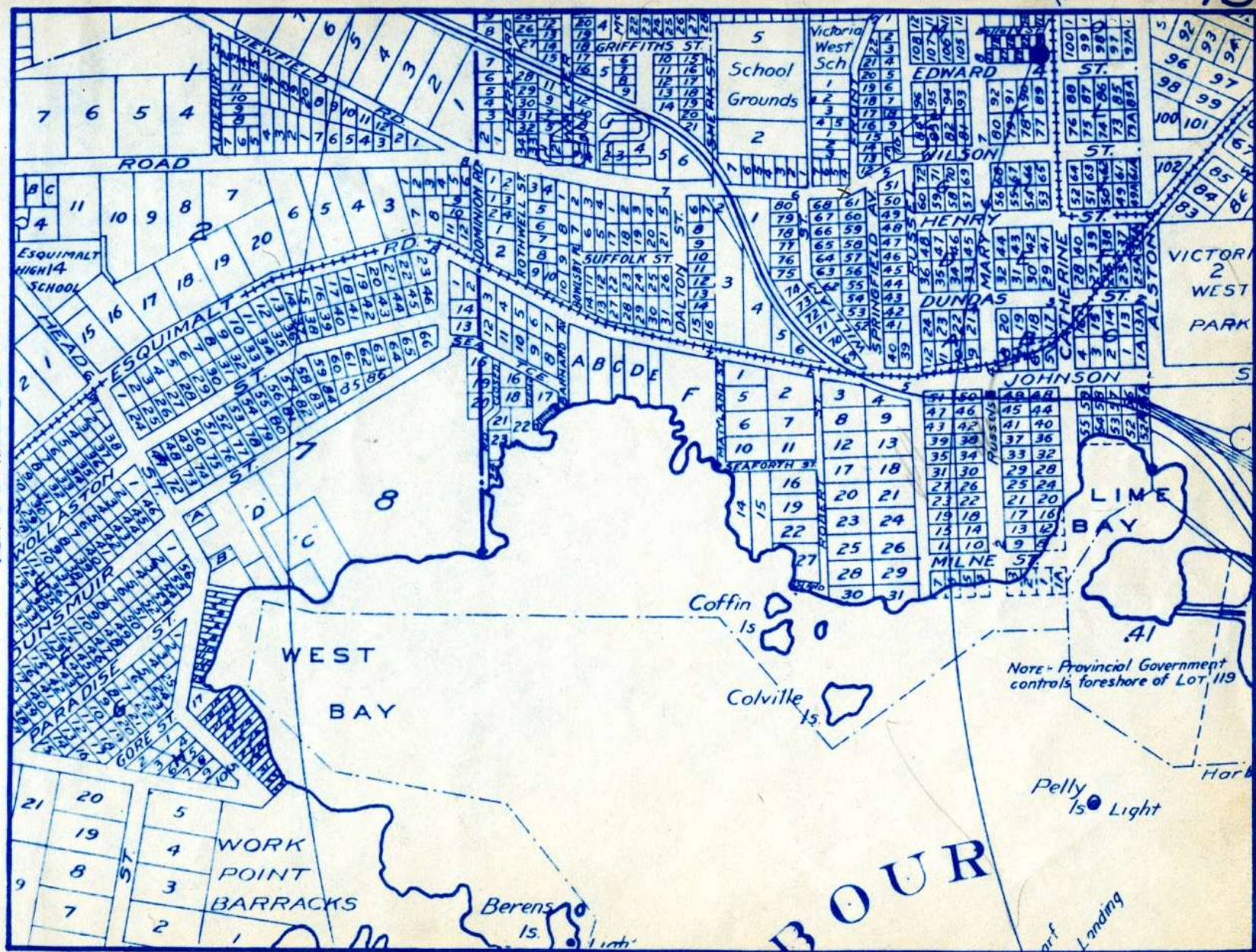
16 TO EAST

8 TO SOUTH

THE ISLAND BLUE PRINT & MAP CO  
Sawward Bldg. VICTORIA

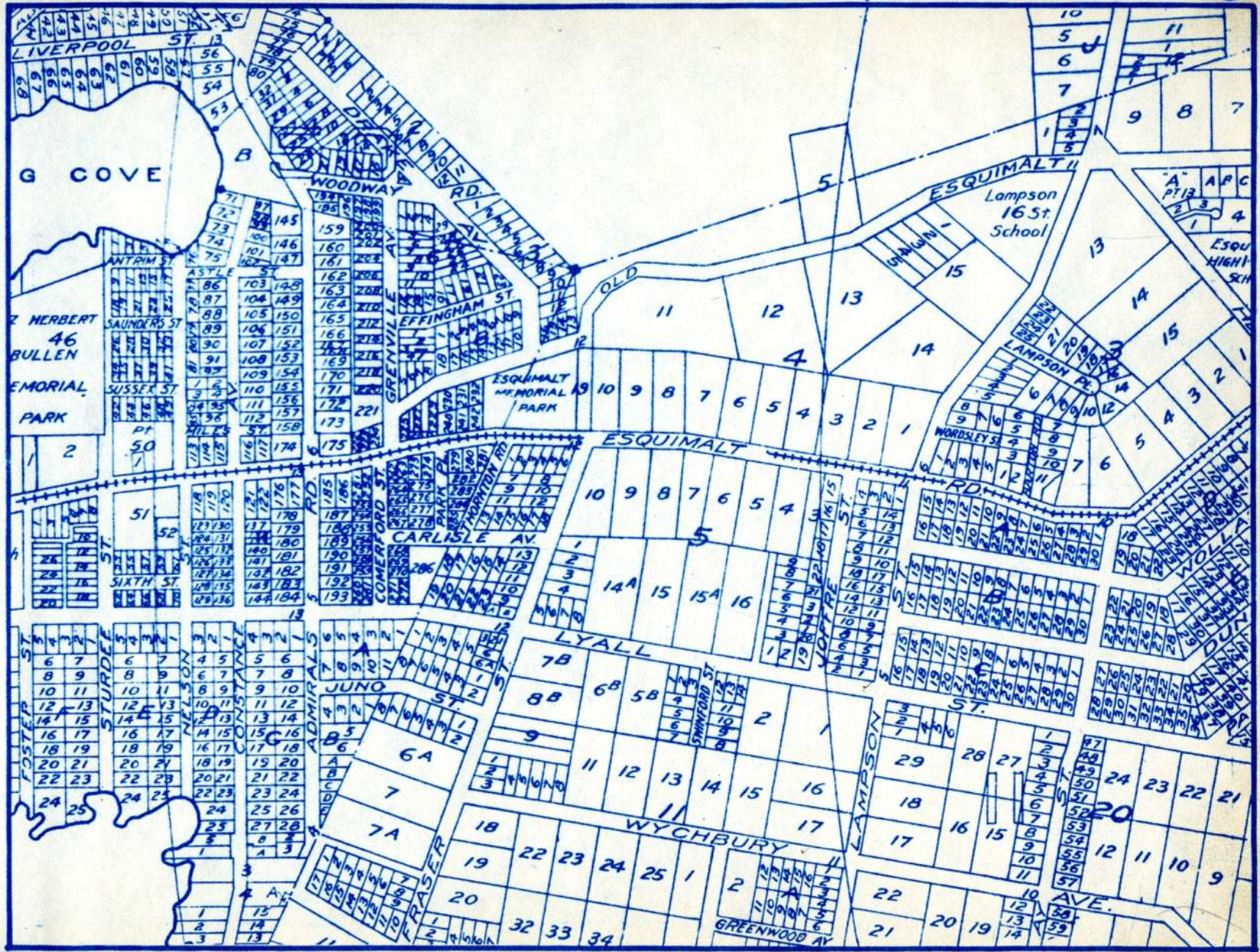
19 TO WEST

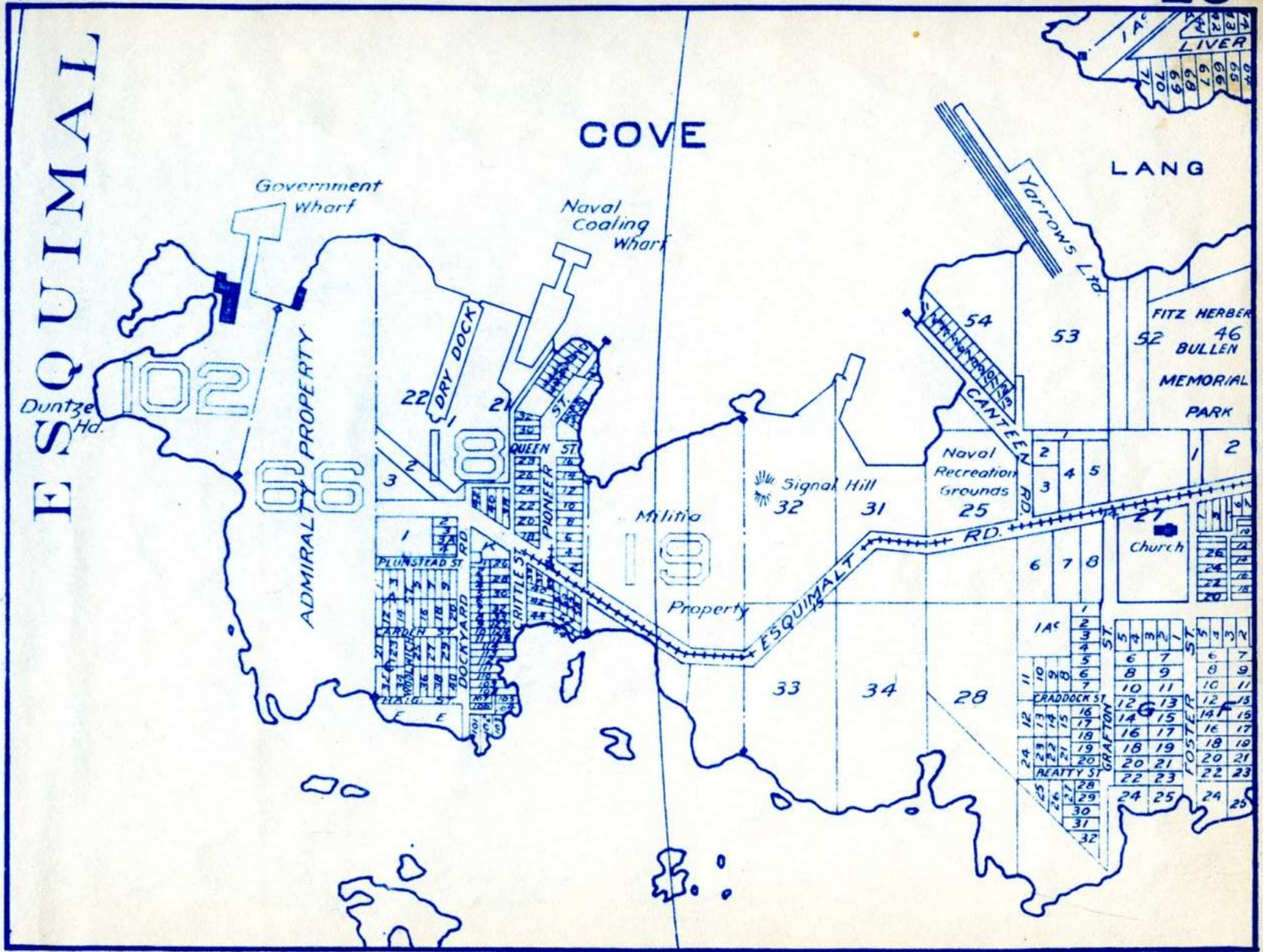
17 TO EAST



20 TO WEST

18 TO EAST

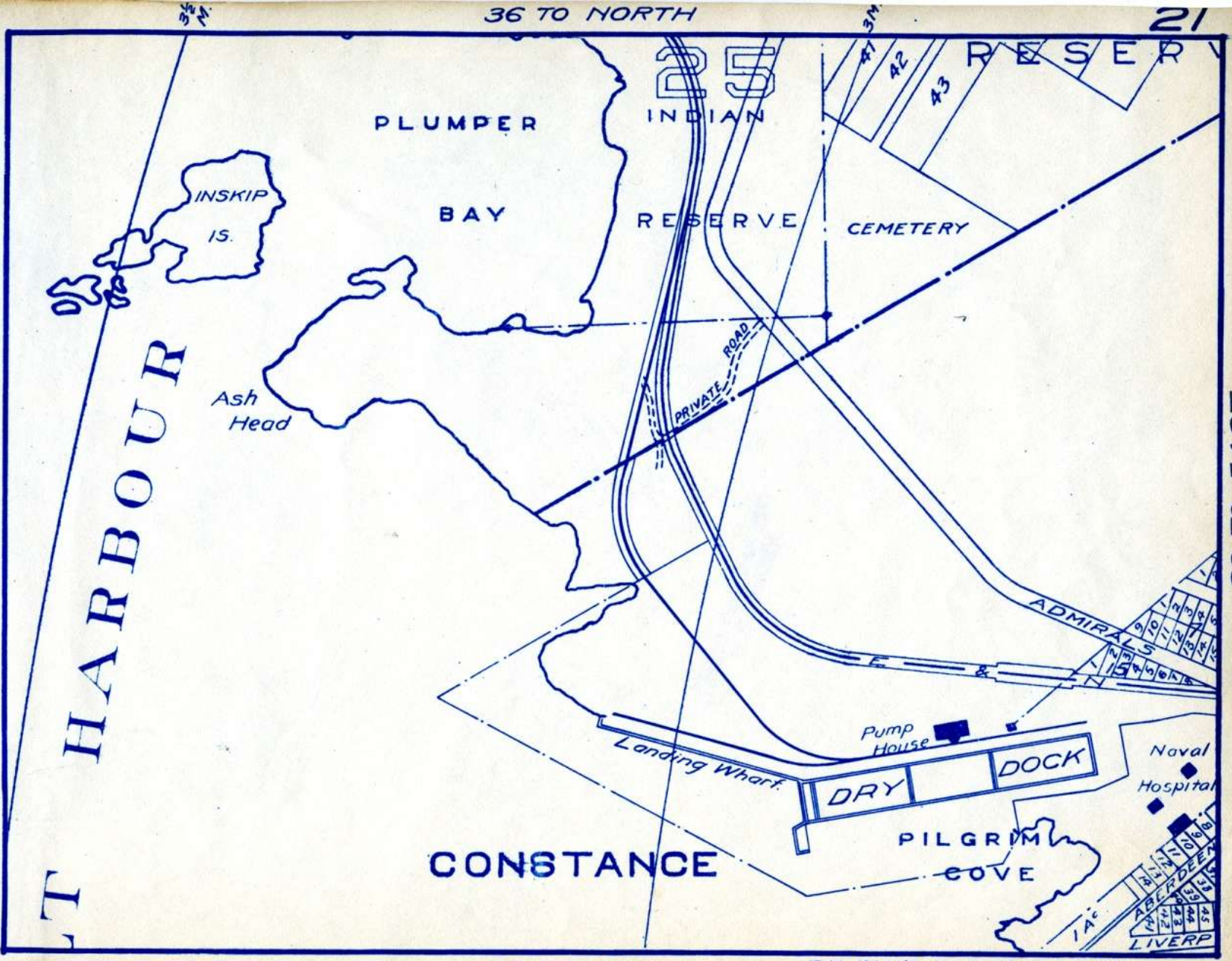




ESQUIMALT

COVE

LANG



HARBOUR

PLUMPER BAY

INSKIP IS.

Ash Head

INDIAN RESERVE

RESERVE

CEMETERY

PRIVATE ROAD

ADMIRALS

Naval Hospital

PILGRIM COVE

CONSTANCE

Pump House

DRY DOCK

Landing Wharf

LIVERP

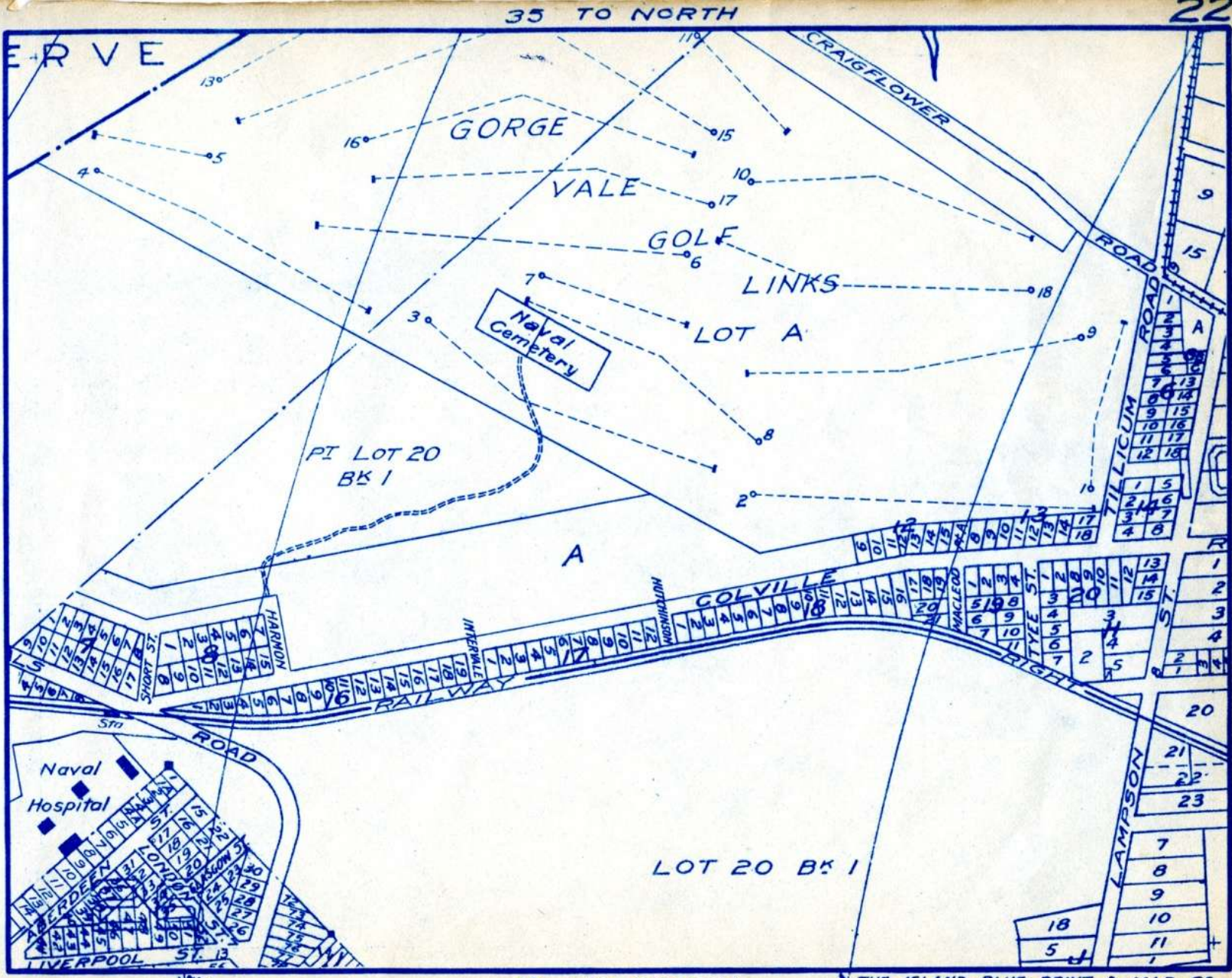
20 TO SOUTH

THE ISLAND BLUE PRINT & MAP CO  
Seaward Bldg. VICTORIA

22 TO EAST

36 TO NORTH

21



21 TO WEST

35 TO NORTH

22

23 TO EAST

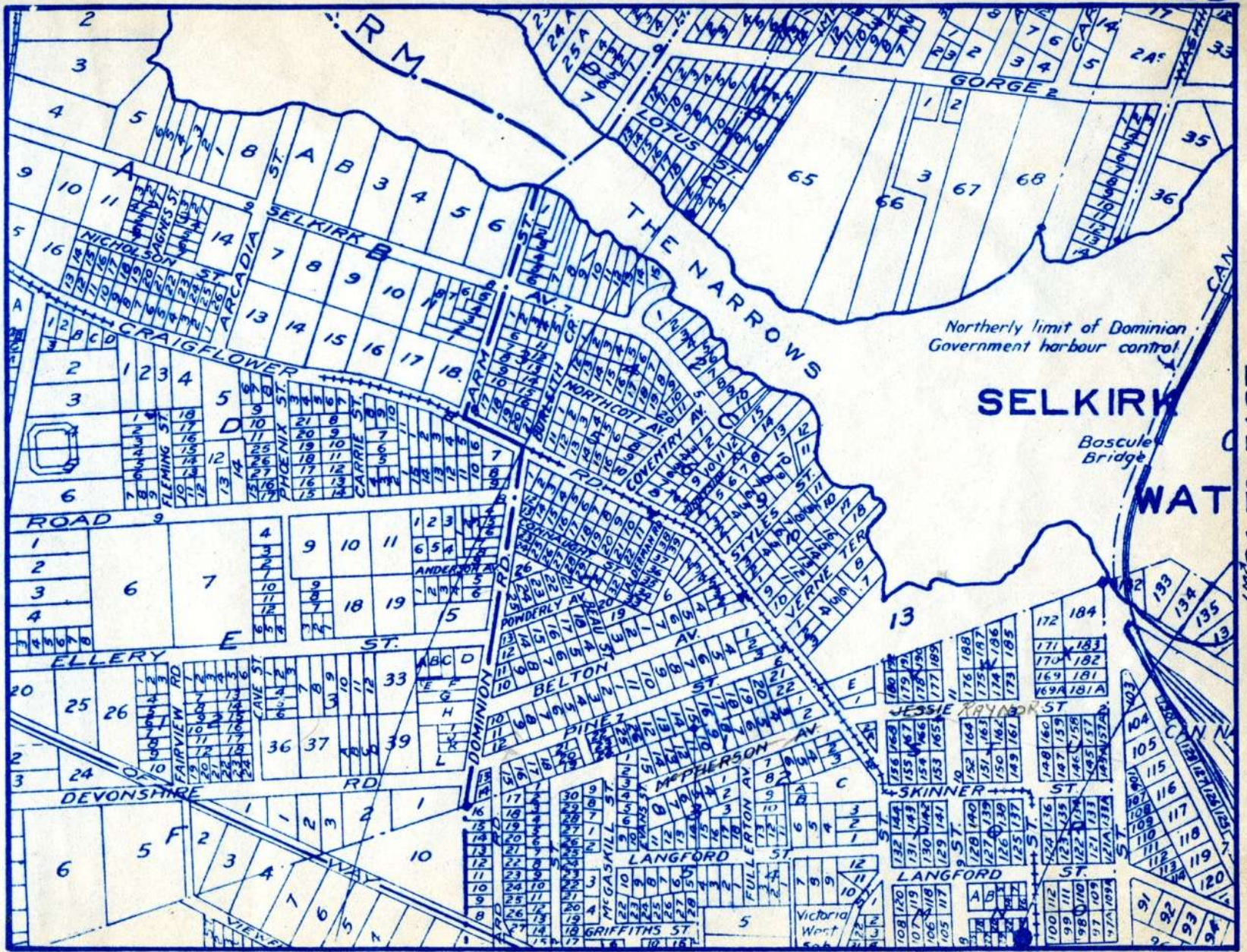
19 TO SOUTH

THE ISLAND BLUE PRINT & MAP CO  
Seyward Bldg. VICTORIA

34 TO NORTH

23

22 TO WEST



Northerly limit of Dominion Government harbour control

**SELKIRK**

Bascule Bridge

**WAT**

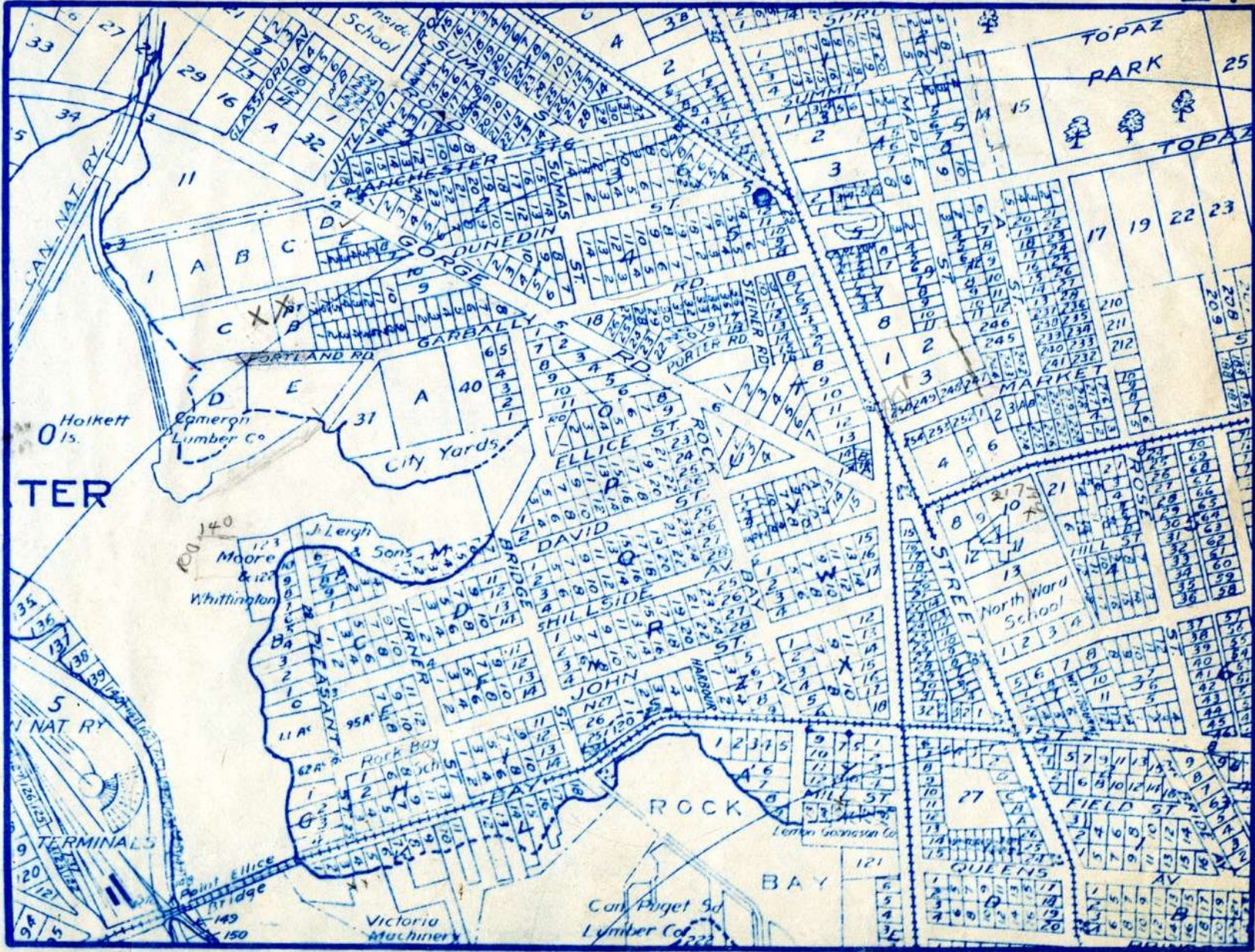
24 TO EAST

12 M

18 TO SOUTH

THE ISLAND BLUE PRINT & MAP CO  
Sayward Bldg. VICTORIA





23 TO WEST

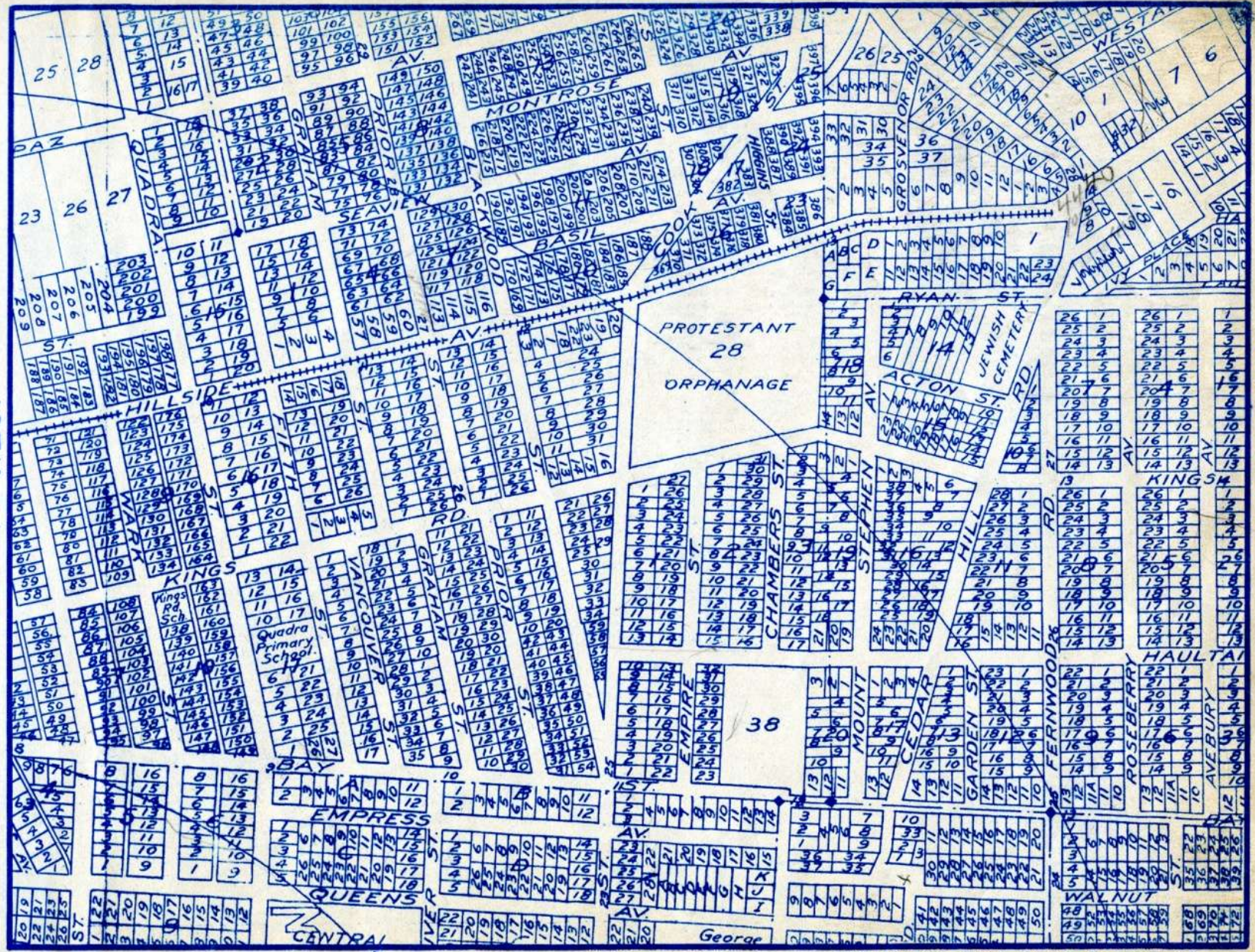
TER

17 TO SOUTH

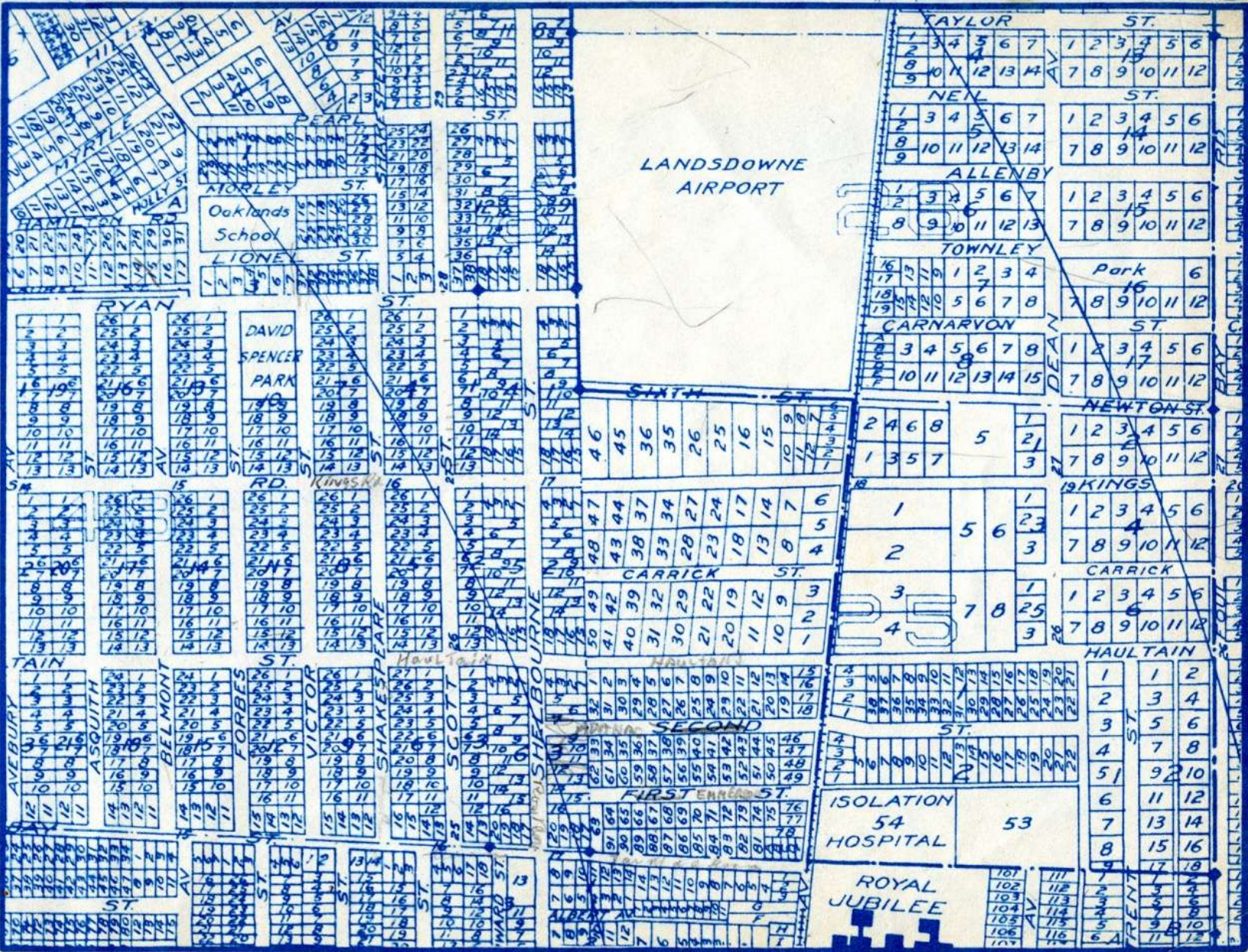
THE ISLAND BLUE PRINT & MAP CO  
Seamless Edits. VICTORIA

24 TO WEST

26 TO EAST

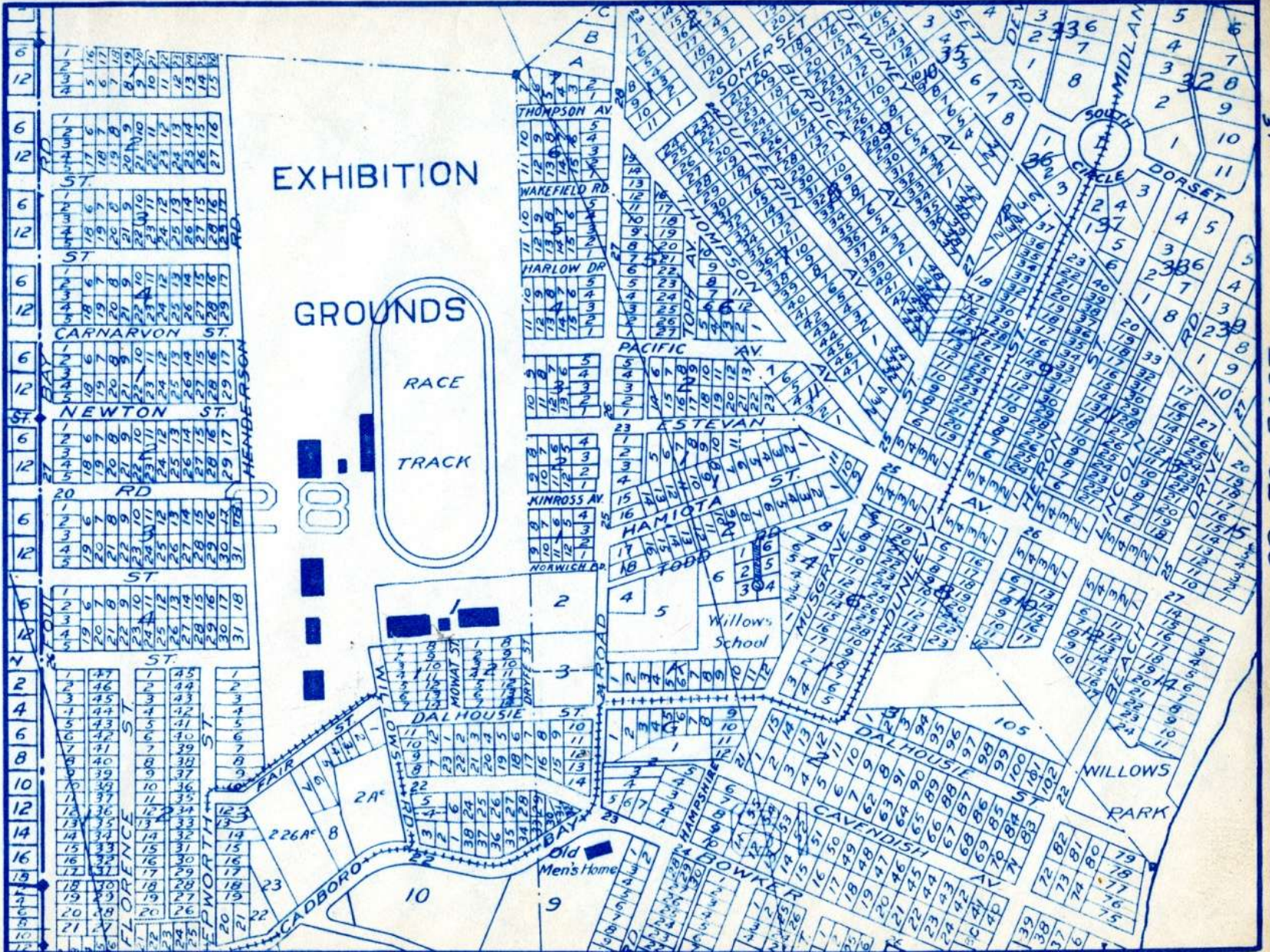


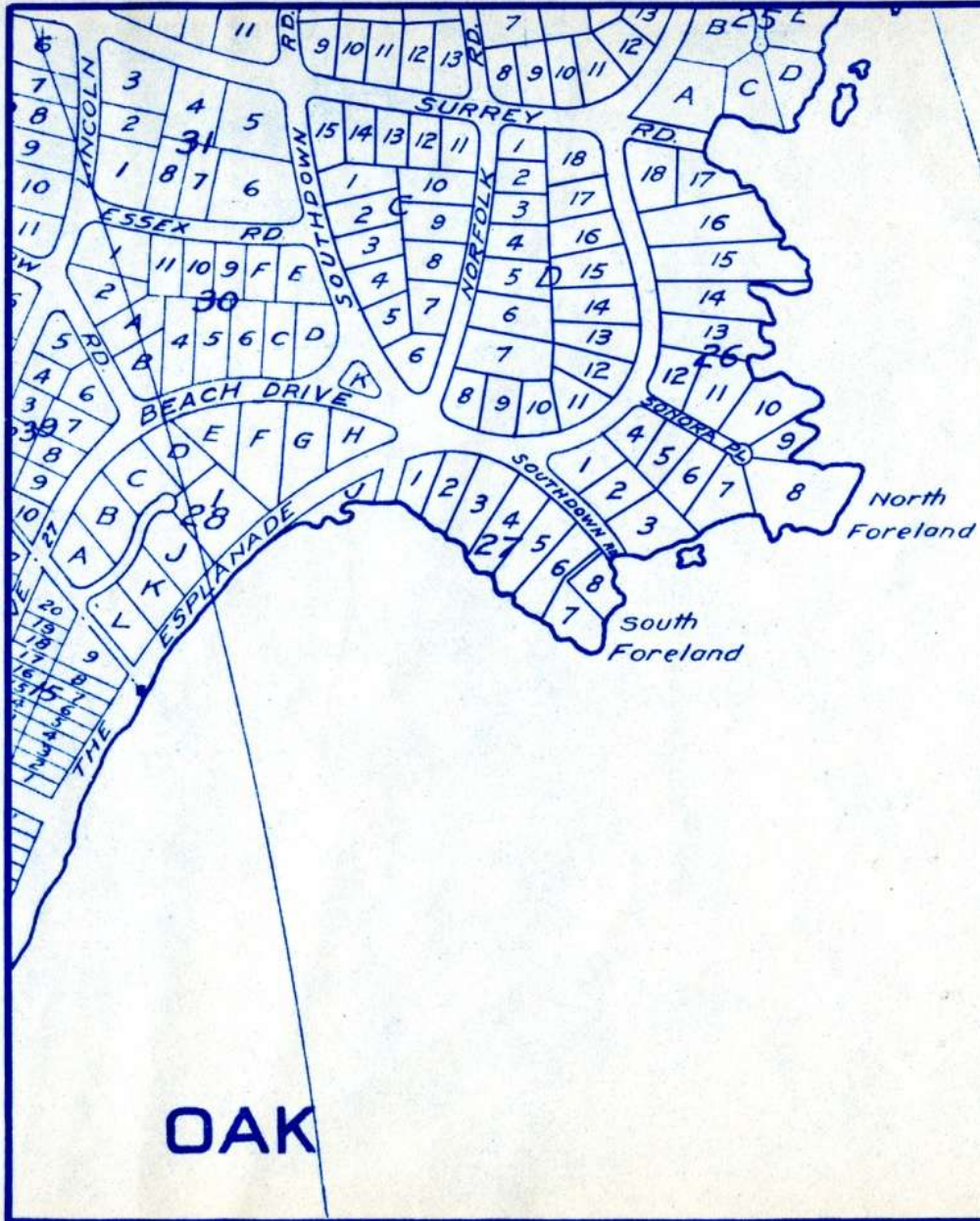
25 TO WEST



26 TO WEST

28 TO EAST





27 TO WEST

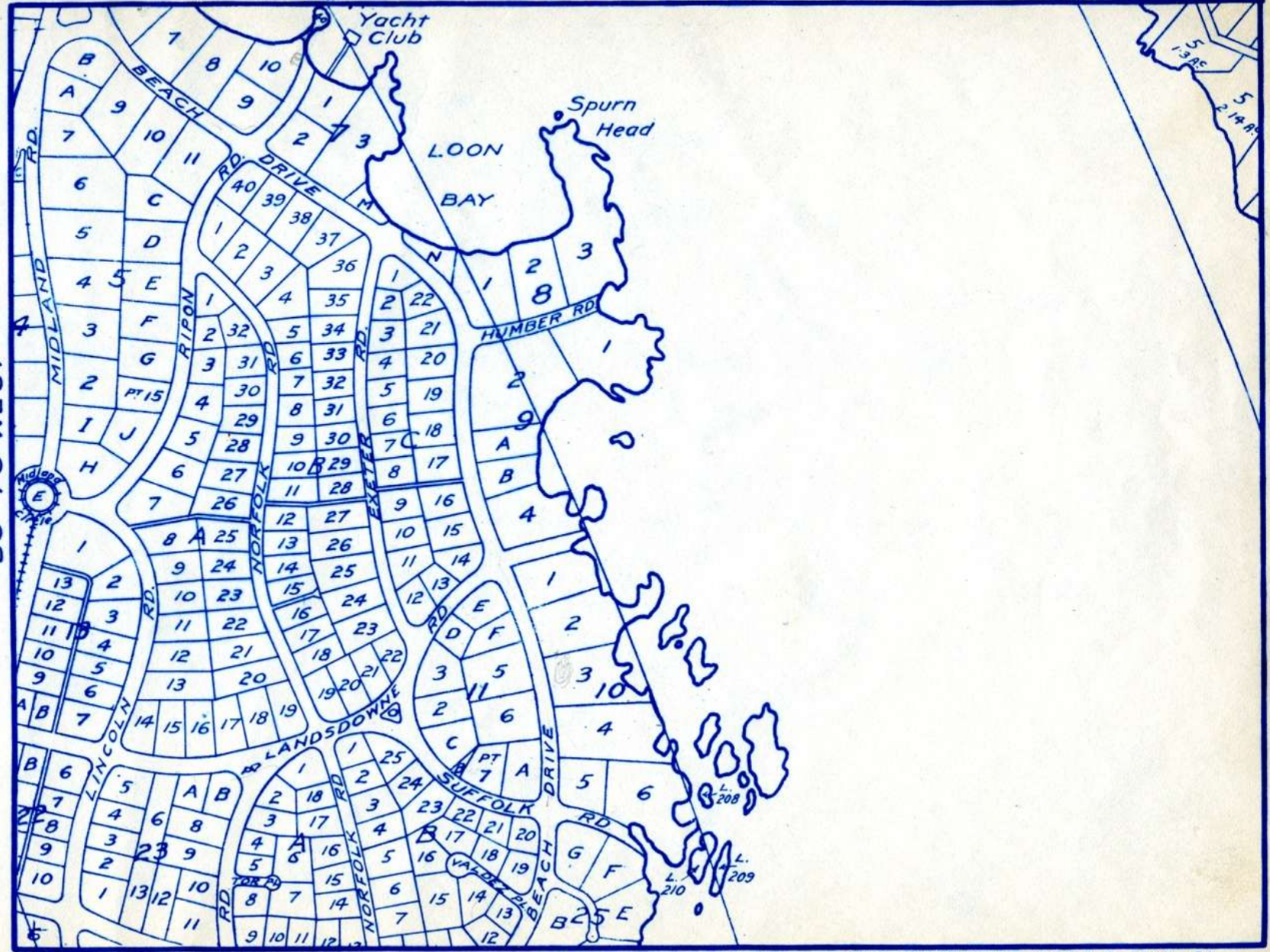
31 N

OAK

44 TO NORTH

29

30 TO WEST

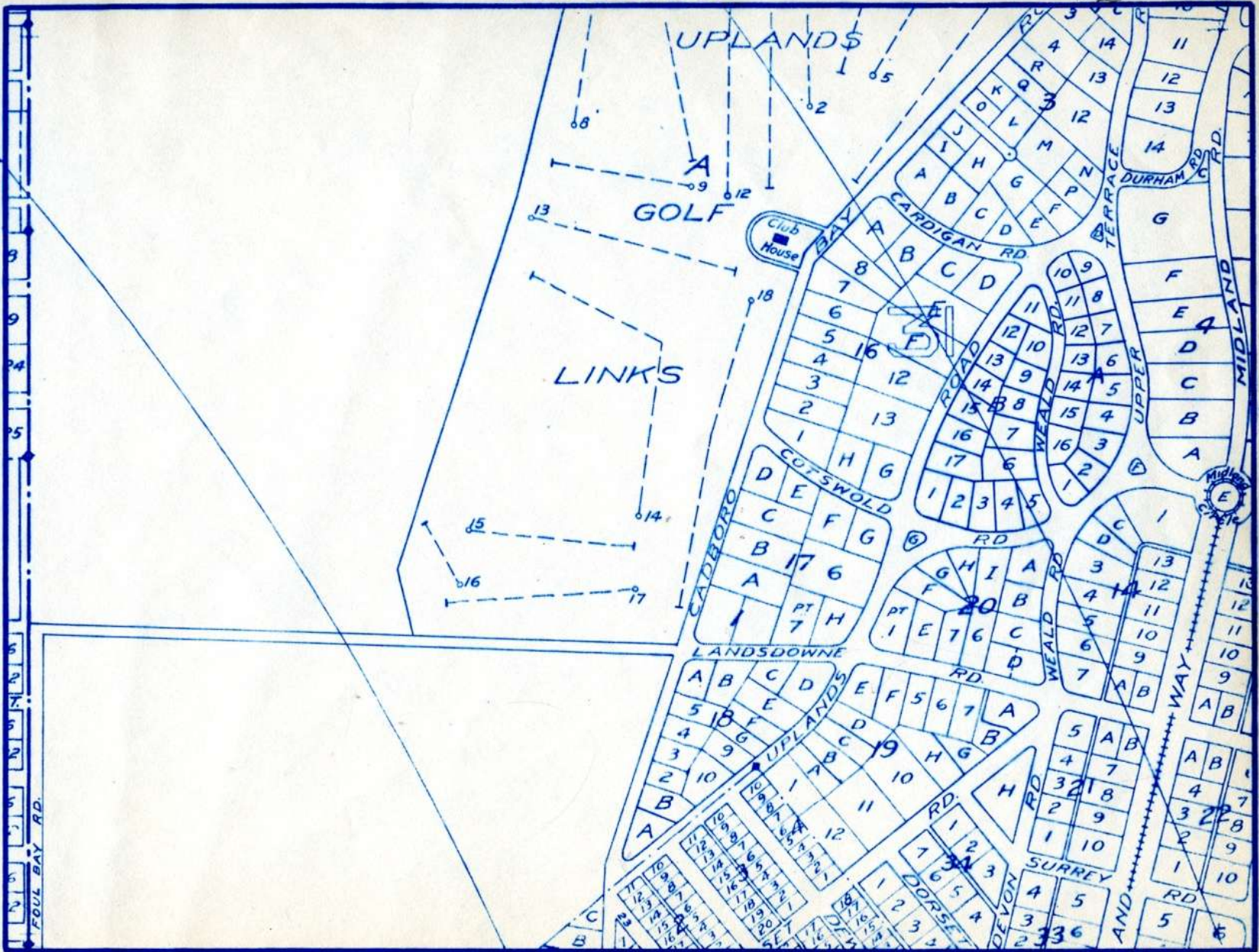


3M.

28 TO SOUTH

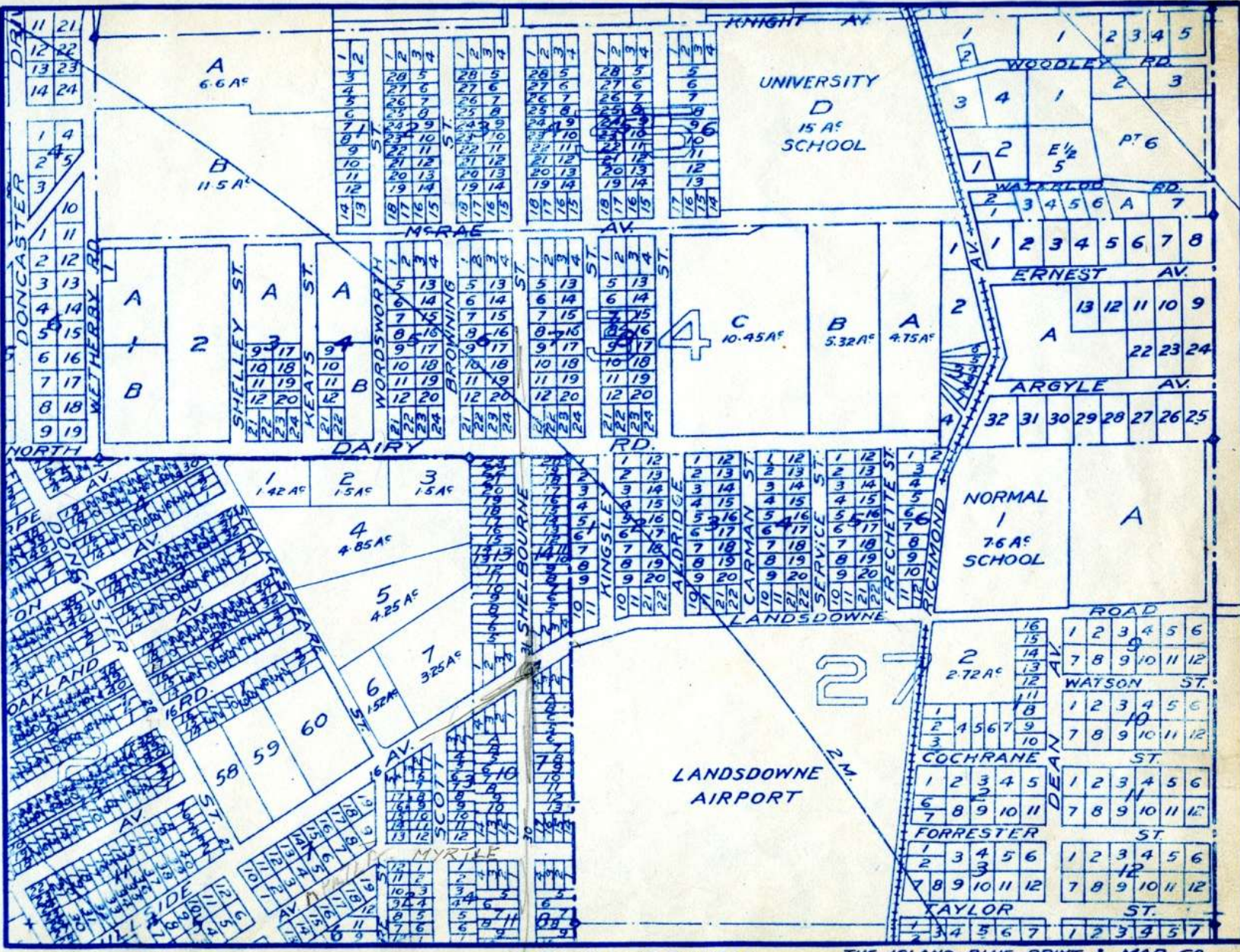
THE ISLAND BLUE PRINT & MAP CO  
Sayward Bldg. VICTORIA

31 TO WEST



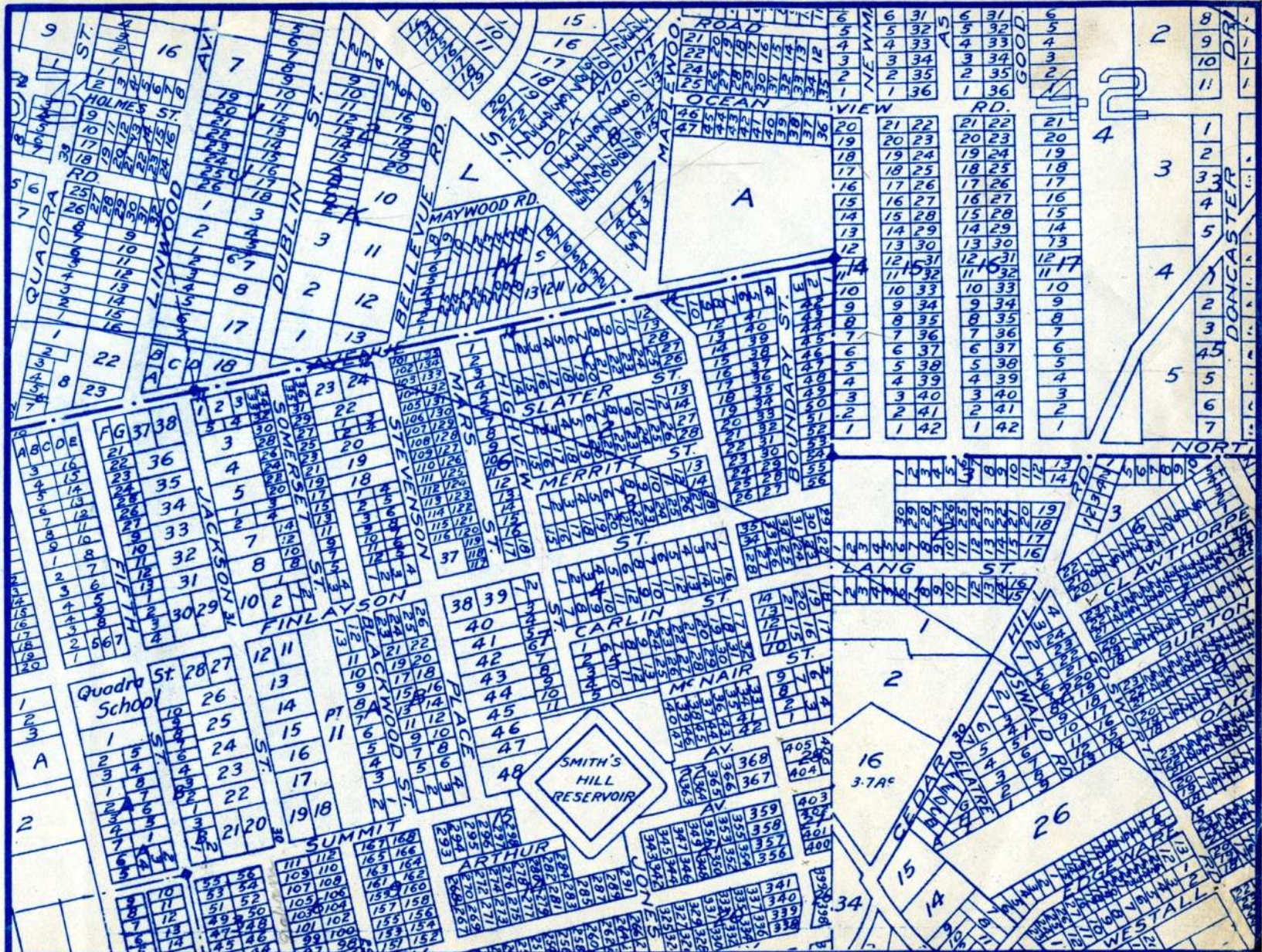
32 TO WEST

30 TO EAST





33 TO WEST



25 TO SOUTH

THE ISLAND BLUE PRINT & MAP CO  
Sayward Bldg. VICTORIA

31 TO EAST

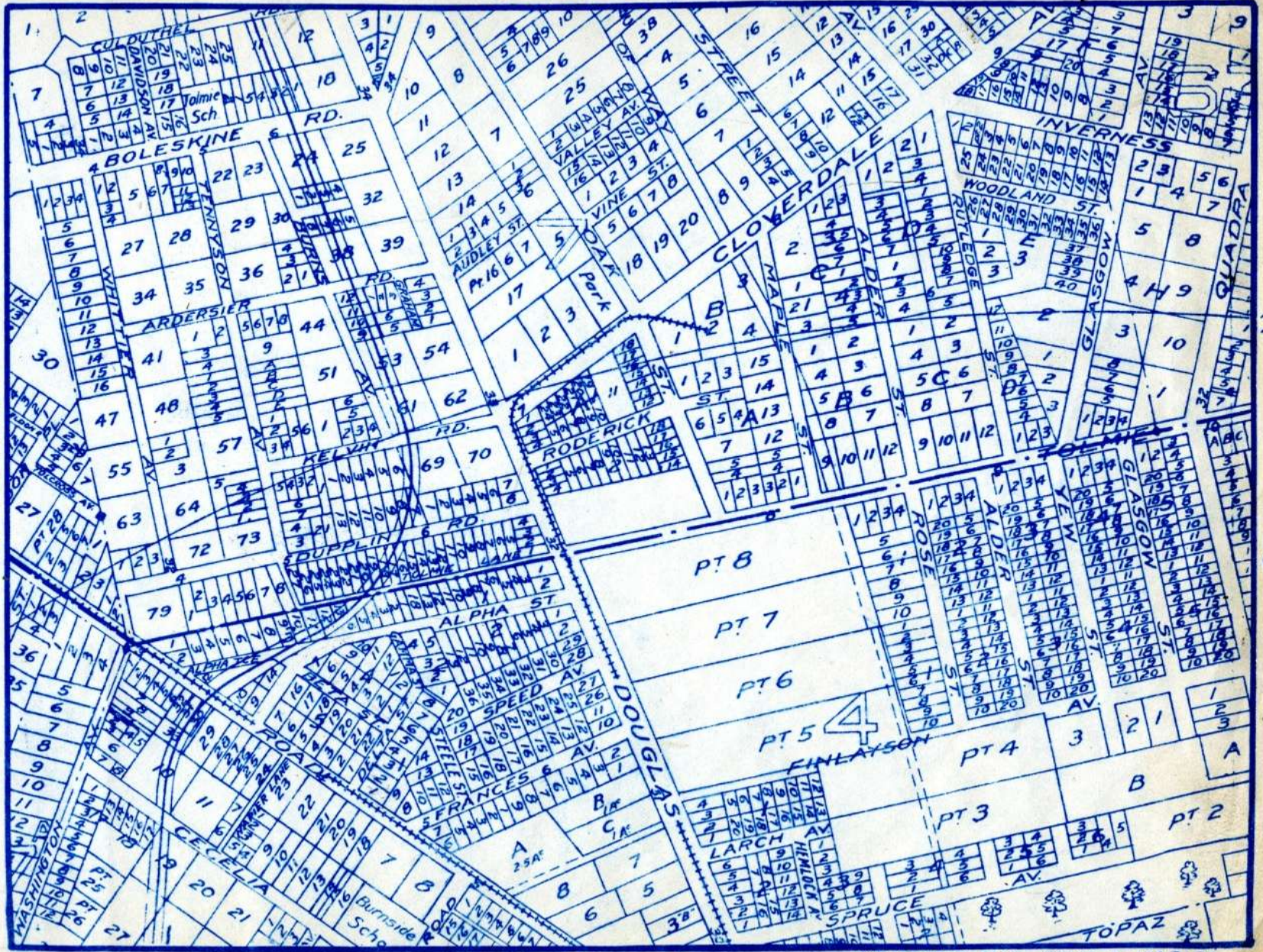
32

2W

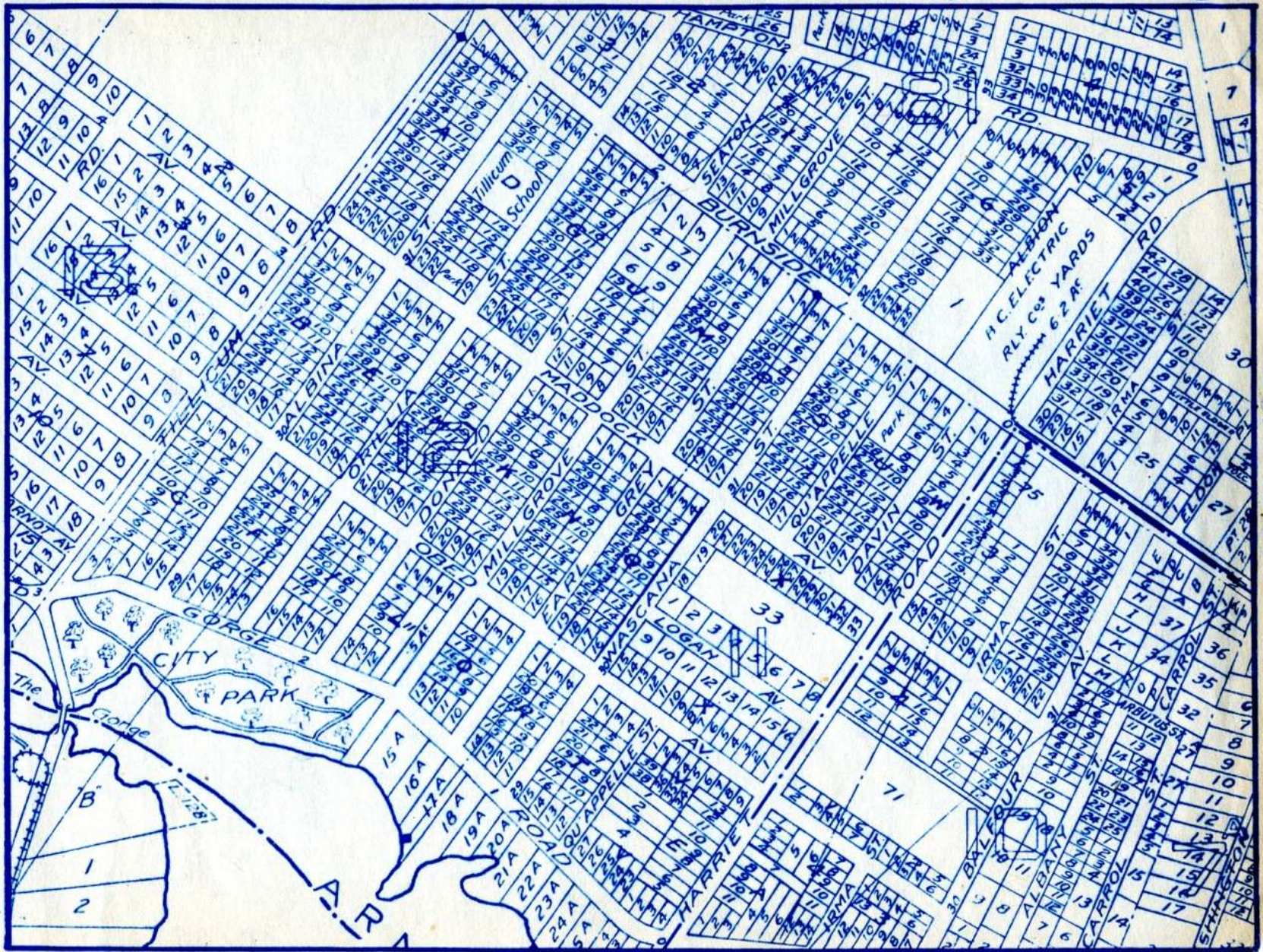
2W

34 TO WEST

32 TO EAST



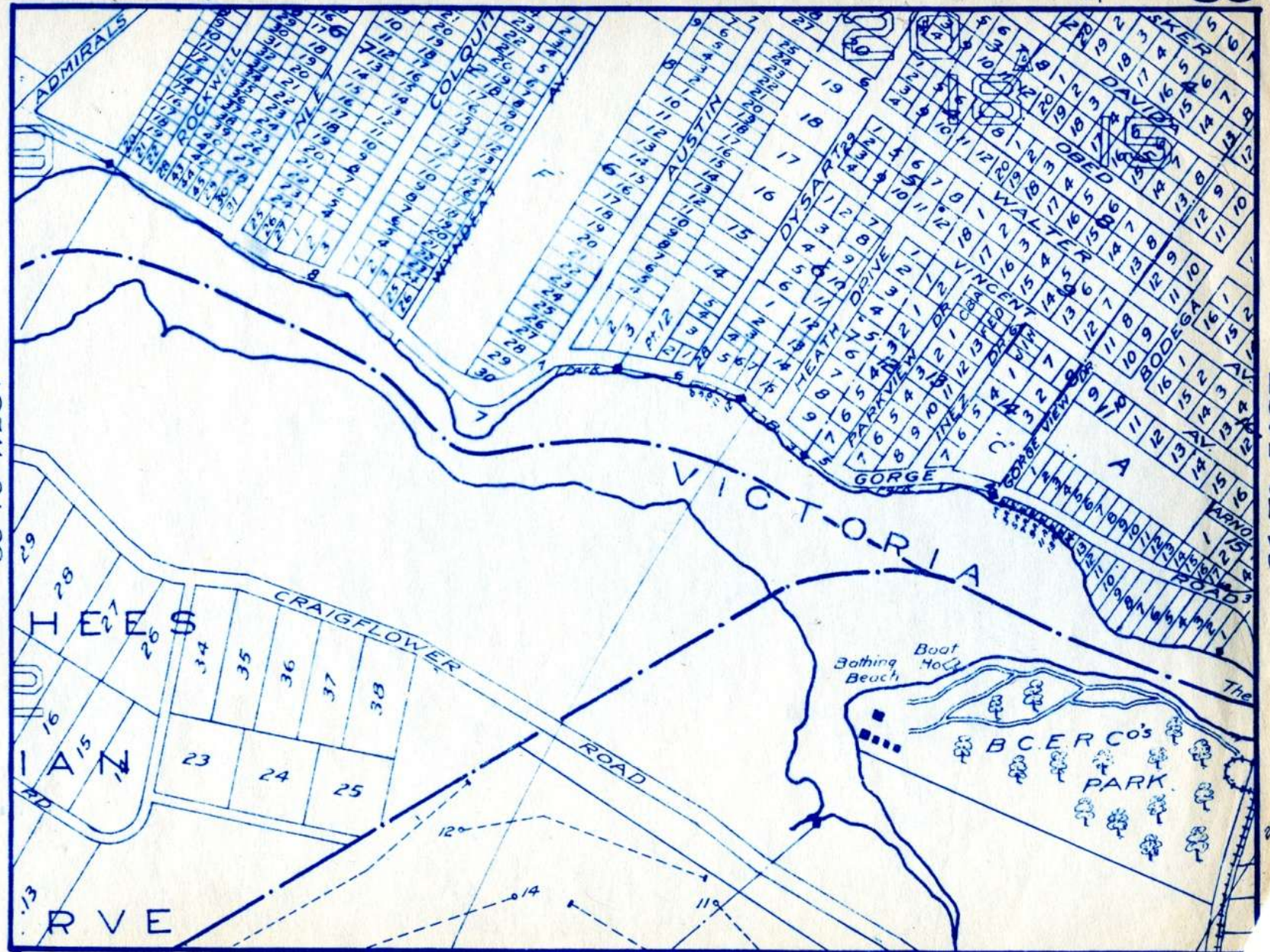
35 TO WEST



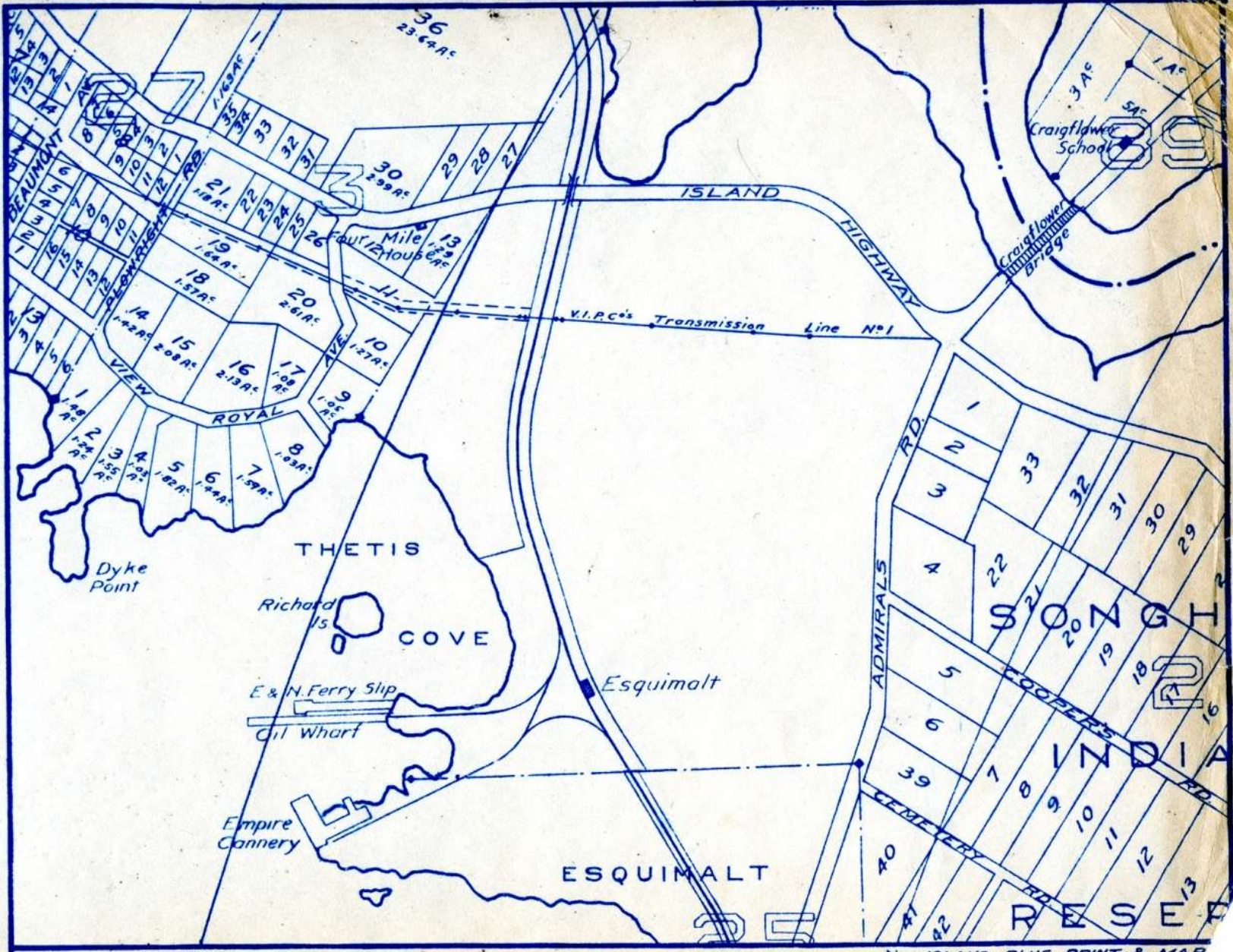
33 TO EAST

36 TO WEST

34 TO EAST



37 TO NORTH



3 1/2 M.

21 TO SOUTH

3 M.

ISLAND BLUE PRINT & MAP  
Sayward Bldg. Vic-

5 TO EAST

8 tickets  
302  
40

38 181  
72  
78

12  
No 1 featuring  
No 1 featuring  
No 1 featuring

1392

City Assessor's Office,  
Victoria, B. C.

City Assessor's Office,  
Victoria, B. C.

150699

5220  
5220  
5220  
5220  
5220

165091  
15051  
15051  
15051  
15051

W W

1372 Paid

1691

